



**NORTHWEST**  
HOME BUILDER GROUP

**Lot 12 KKWZ ADU**  
**Total 2,801 sq ft**  
**Primary 2,013 + 788 ADU**



FRONT ELEVATION

**360-521-1973**



**WWW.NWHOMEBUILDERGROUP.COM**

RENDERINGS, PLANS, SPECIFICATIONS, TERMS, CONDITIONS AND STATEMENTS CONTAINED IN THIS BROCHURE ARE PROPOSED ONLY. NW HOME-BUILDER GROUP RESERVES THE RIGHT TO MODIFY, REVISE OR WITHDRAW ANY OR ALL OF SAME IN ITS SOLE DISCRETION AND WITHOUT PRIOR NOTICE.





**NORTHWEST**  
HOME BUILDER GROUP

**Lot 12 KKWZ ADU**  
**Total 2,801 sq ft**  
**Primary 2,013 + 788 ADU**



AREA	1ST FLOOR	2ND FLOOR	360 SF
			428 SF
			788 SF

AREA	1ST FLOOR	2ND FLOOR	128 SF
			1285 SF
			2013 SF

**360-521-1973**



[WWW.NWHOMEBUILDERGROUP.COM](http://WWW.NWHOMEBUILDERGROUP.COM)

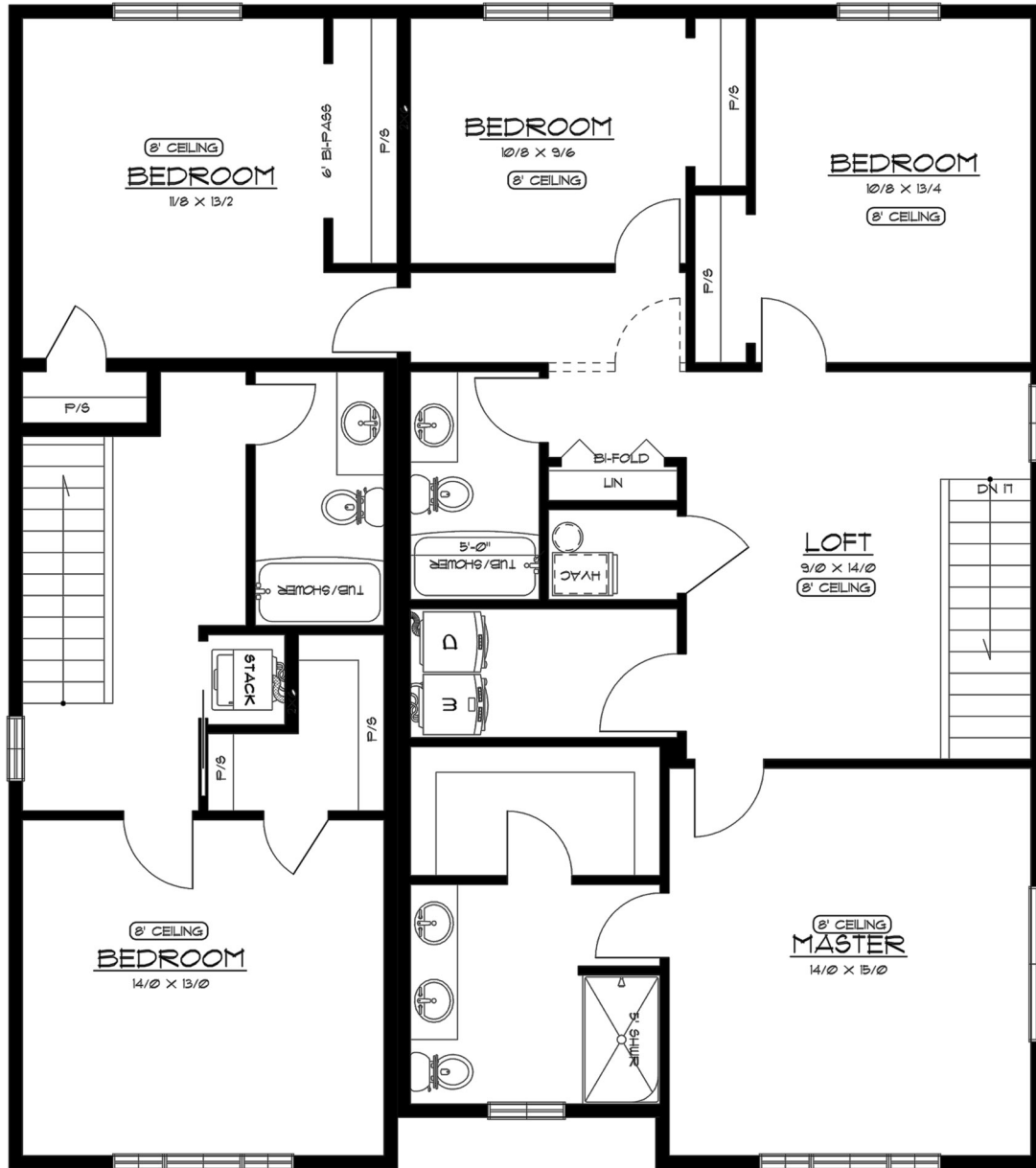
RENDERINGS, PLANS, SPECIFICATIONS, TERMS, CONDITIONS AND STATEMENTS CONTAINED IN THIS BROCHURE ARE PROPOSED ONLY. NW HOME-BUILDER GROUP RESERVES THE RIGHT TO MODIFY, REVISE OR WITHDRAW ANY OR ALL OF SAME IN ITS SOLE DISCRETION AND WITHOUT PRIOR NOTICE.





**NORTHWEST**  
HOME BUILDER GROUP

**Lot 12 KKWZ ADU**  
**Total 2,801 sq ft**  
**Primary 2,013 + 788 ADU**



360-521-1973



[WWW.NWHOMEBUILDERGROUP.COM](http://WWW.NWHOMEBUILDERGROUP.COM)

RENDERINGS, PLANS, SPECIFICATIONS, TERMS, CONDITIONS AND STATEMENTS CONTAINED IN THIS BROCHURE ARE PROPOSED ONLY. NW HOME-BUILDER GROUP RESERVES THE RIGHT TO MODIFY, REVISE OR WITHDRAW ANY OR ALL OF SAME IN ITS SOLE DISCRETION AND WITHOUT PRIOR NOTICE.

