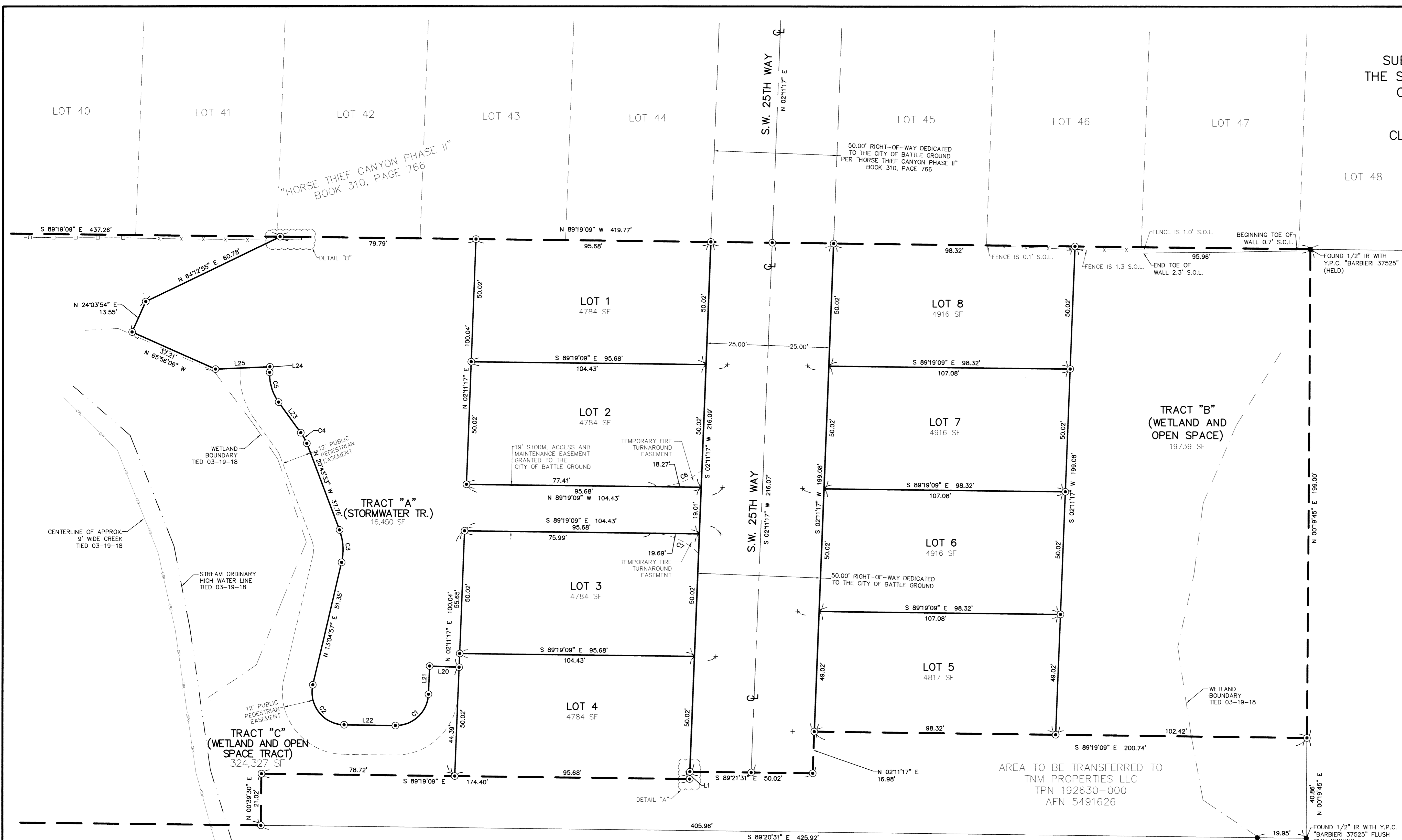


QUAIL FIRS

SUBDIVISION OF A PORTION OF THE SOUTH 1/2 OF THE NORTH 1/2 OF THE SE 1/4 OF SEC 4, T. 3 N., R. 2 E., W.M. CITY OF BATTLE GROUND CLARK COUNTY, WASHINGTON



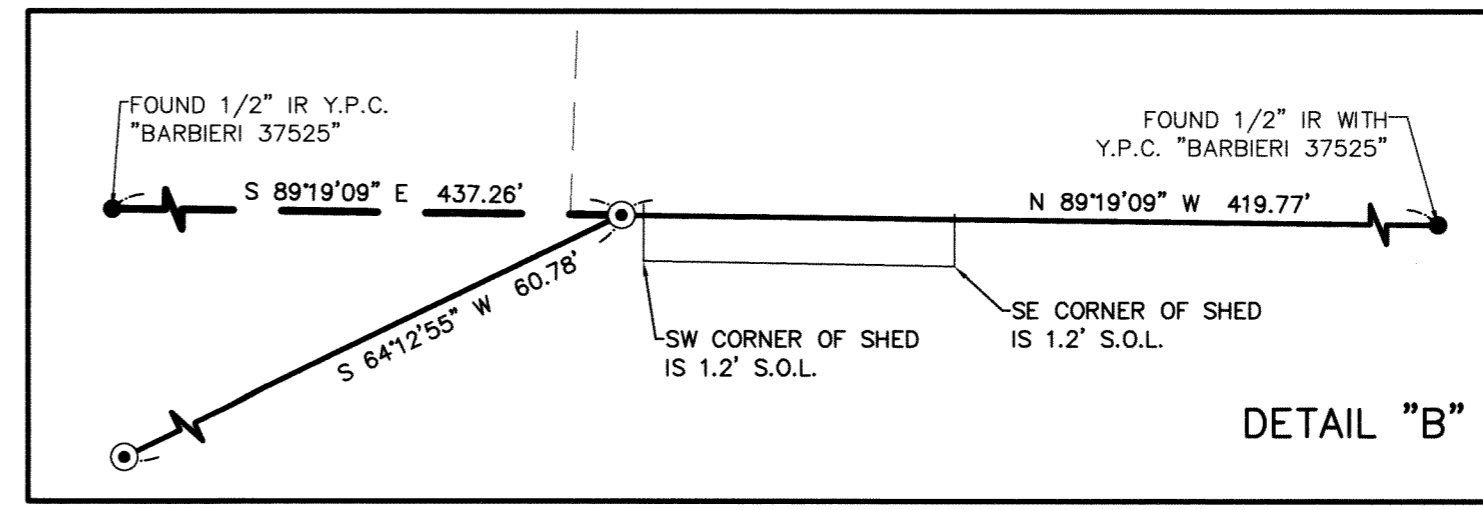
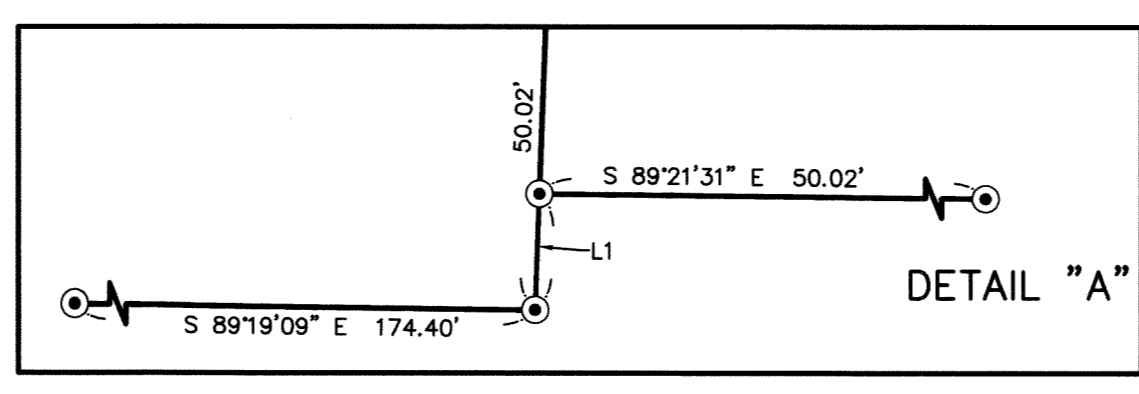
- LEGEND:**
- ⊕ INDICATES RIGHT OF WAY CENTERLINE
 - INDICATES MONUMENT FOUND AS NOTED
 - INDICATES 1/2" x 24" REBAR WITH YELLOW PLASTIC CAP INSCRIBED "GALVIN 43609"
 - + INDICATES ROCK NAIL WITH BRASS WASHER INSCRIBED PLS 43609 SET AT THE EXTENSION OF LOT LINE IN THE CURB, FOR THE PURPOSE OF LINE, NOT DISTANCE
 - AFN: INDICATES AUDITOR'S FILE NUMBER
 - SF INDICATES SQUARE FEET
 - N.O.L. INDICATES NORTH OF LINE
 - S.O.L. INDICATES SOUTH OF LINE
 - Y.P.C. INDICATES YELLOW PLASTIC CAP
 - L.C.R. INDICATES LAND CORNER RECORD
 - R.O.S. INDICATES RECORD OF SURVEY
 - INDICATES BOUNDARY
 - x-x- INDICATES FENCE LINE
 - o-o- INDICATES CHAINLINK FENCE LINE
 - INDICATES WOOD FENCE LINE
 - INDICATES ORDINARY HIGH WATER
 - - - INDICATES WETLAND LINE

LINE TABLE

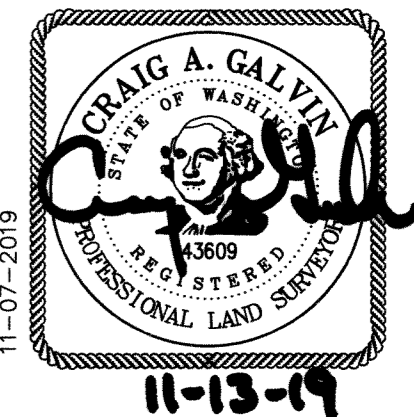
LINE	BEARING	DISTANCE
L20	S 87°48'43" E	12.00'
L21	N 02°11'17" E	11.50'
L22	S 89°13'03" E	20.92'
L23	S 35°56'18" E	15.41'
L24	S 02°20'48" W	2.24'
L25	N 87°38'24" E	22.17'

CURVE TABLE

CURVE	RADIUS	DELTA	ARC DIST.	CHORD BEARING	CHORD DIST.
C1	13.28'	88°35'40"	20.53'	N 46°29'07" E	18.55'
C2	13.28'	102°18'01"	23.71'	S 38°04'03" E	20.68'
C3	22.72'	33°48'30"	13.41'	N 03°49'18" W	13.21'
C4	22.54'	12°42'25"	5.00'	N 29°36'41" W	4.99'
C5	19.28'	38°17'06"	12.88'	S 16°47'45" E	12.64'
C6	28.00'	41°13'25"	20.15'	N 70°04'08" E	19.71'
C7	28.00'	44°07'52"	21.57'	N 67°08'44" W	21.04'



BASIS OF BEARING:
N 00°28'30" E FOUND AND HELD LINE OF MONUMENTS ALONG THE EAST LINE OF THE SOUTHEAST QUARTER OF SECTION 4 AS SHOWN ON SURVEY REFERENCE NO. 1 11-07-2019



SCALE 1 INCH = 20 FEET

MINISTER-GLAESER SURVEYING INC.
2200 E. EVERGREEN BLVD.
VANCOUVER, WA 98661
(360) 694-3313

SCALE: 1"=20'
JOB NO. 17-357
DATE: 11-07-19
CALC BY: CAG
DRAWN BY: AAD
CHECKED BY: CAG
SHEET 3 OF 3