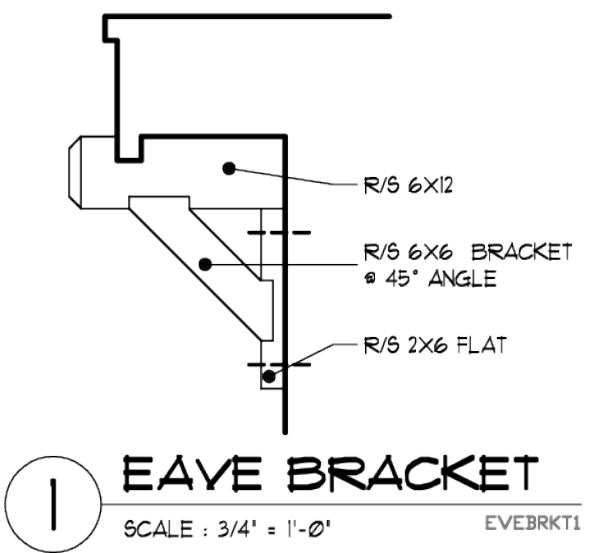


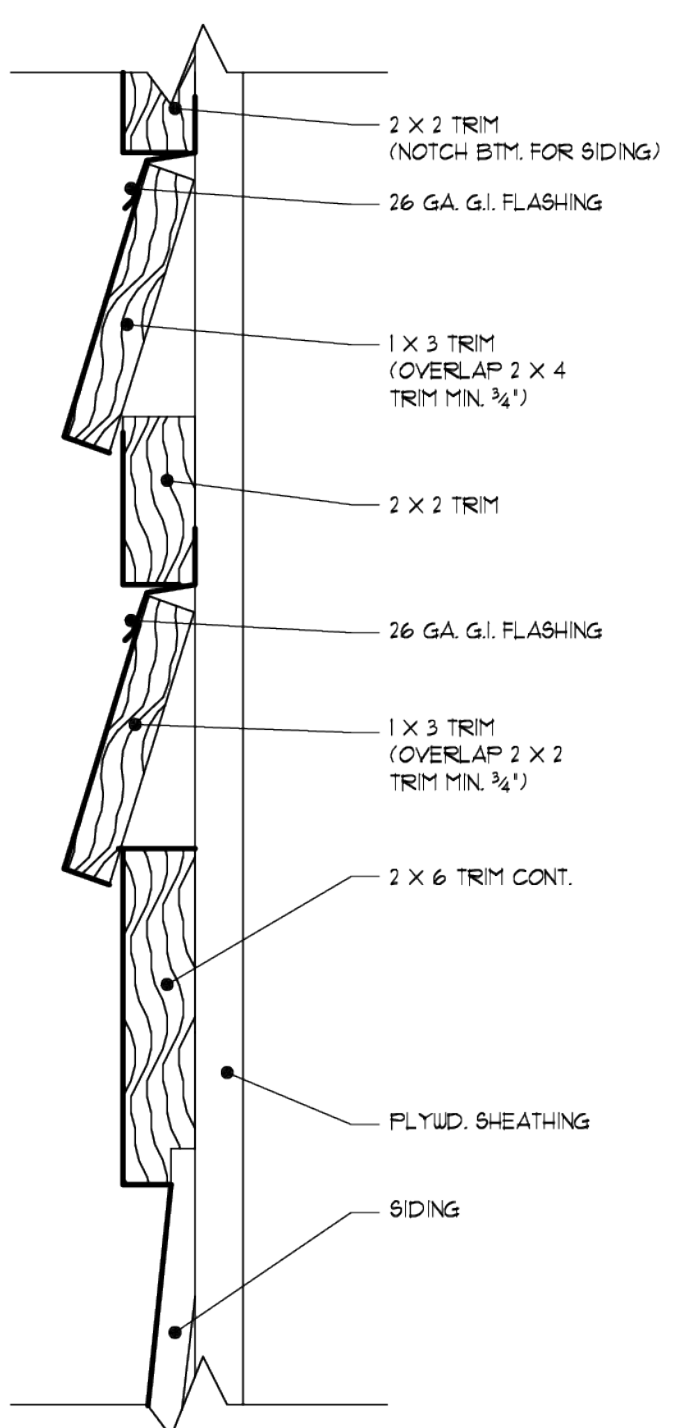
- 6 X 12 DECORATIVE BRACKETS (TYPICAL). PROVIDE 26 GA. G.I. CAP FLASHING AT EXPOSED PORTION
- ROOFING MATERIAL (SEE ROOF PLAN)
- HORIZONTAL FIBER CEMENT LAP SIDING
- 2 X 10 R/S TRIM BD. W/ 26 GA. G.I. FLASHING
- 5/4 X FIBERCEMENT CORNER BDS.
- G.I. GUTTER ON 2 X 8 FASCIA OR DOWNSPOUTS (SEE ROOF PLAN)
- THE TYPE OF EXTERIOR FINISH, THE INSTALLATION AND THE WATERPROOFING DETAILS ARE ALL TO BE THE FULL RESPONSIBILITY OF THE OWNER/BLDG. THIS DESIGNER ASSUMES NO RESPONSIBILITY FOR THE INTEGRITY OF THE BLDG ENVELOPE
- STONE VENEER



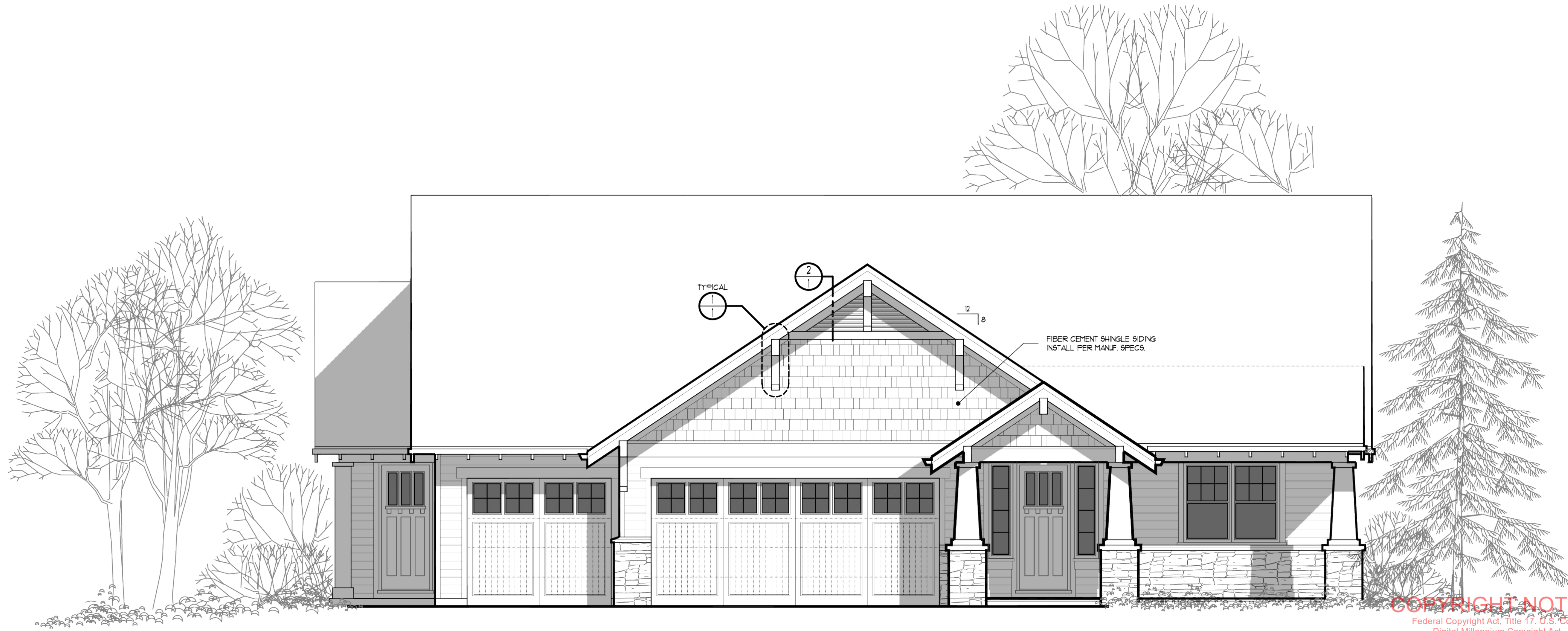
RIGHT SIDE ELEVATION
SCALE: 1/4" = 1'-0"



1 EAVE BRACKET
SCALE: 3/4" = 1'-0" EAVEBRKT1



2 TRIM DETAIL
SCALE: 3" = 1'-0" TRIMDTL2



FRONT ELEVATION
SCALE: 1/4" = 1'-0"

IN AN EFFORT TO DELIVER A BETTER HOME, QUAIL HOMES, LLC RESERVES THE RIGHT TO CHANGE ELEVATIONS, SPECIFICATIONS, MATERIALS AND PRICES WITHOUT PRIOR NOTICE.

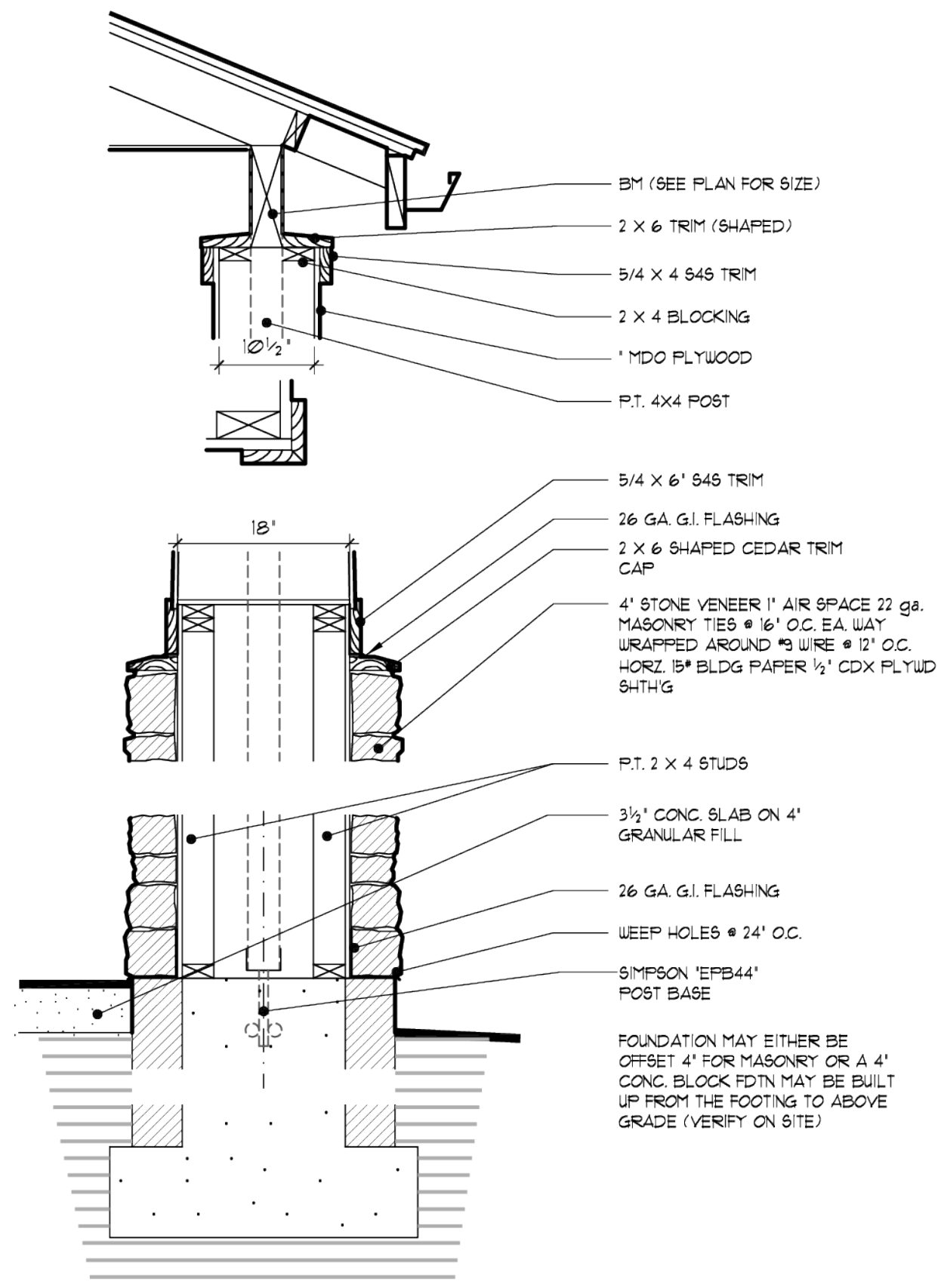
ANY STATEMENTS MADE HEREIN OR OTHERWISE BY QUAIL HOMES, LLC, WHETHER ORALLY OR IN WRITING, REGARDING THE SPECIFICATIONS, QUALITY, COMPONENTS AND PERFORMANCE OF ITS HOMES, INCLUDING, BUT NOT LIMITED TO, THE ENERGY PERFORMANCE (WATER USAGE, ENERGY EFFICIENCY), ARE INFORMATIONAL ONLY AND SHALL NOT BE RELIED ON AS GUARANTEES OR WARRANTIES AS TO THE ACCURACY, COMPLETENESS, RELIABILITY OR SUITABILITY OF SUCH INFORMATION.

COPYRIGHT NOTICE
Federal Copyright Act, Title 17, U.S. Code
Digital Millennium Copyright Act
License #
129034

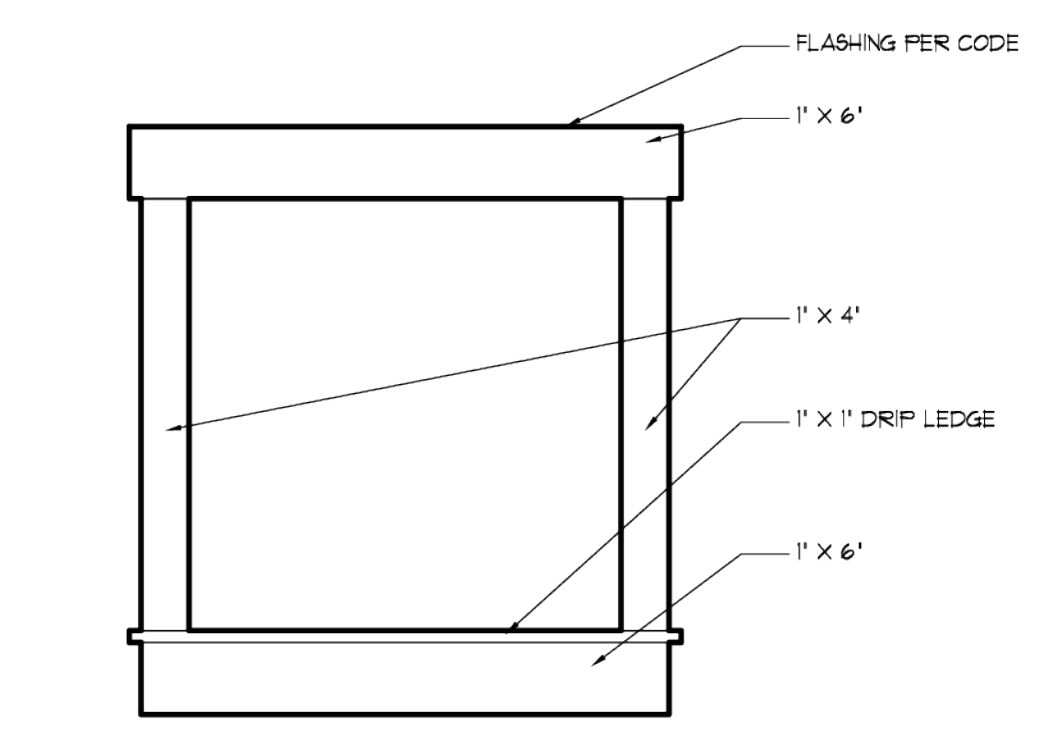
THIS PLAN IS LICENSED FOR THE PURPOSES RELATED TO THE CONSTRUCTION OF A SINGLE RESIDENCE. THIS LICENSE CANNOT BE TRANSFERRED. UNAUTHORIZED REPRODUCTION OR USAGE OF THESE DOCUMENTS OR REMOVAL OF THIS NOTIFICATION IS SUBJECT TO PROSECUTION.

THE CONTRACTOR ASSUMES FULL RESPONSIBILITY FOR THE CORRECT INSTALLATION OF ALL EXTERIOR FINISHES AND WEATHERPROOFING.

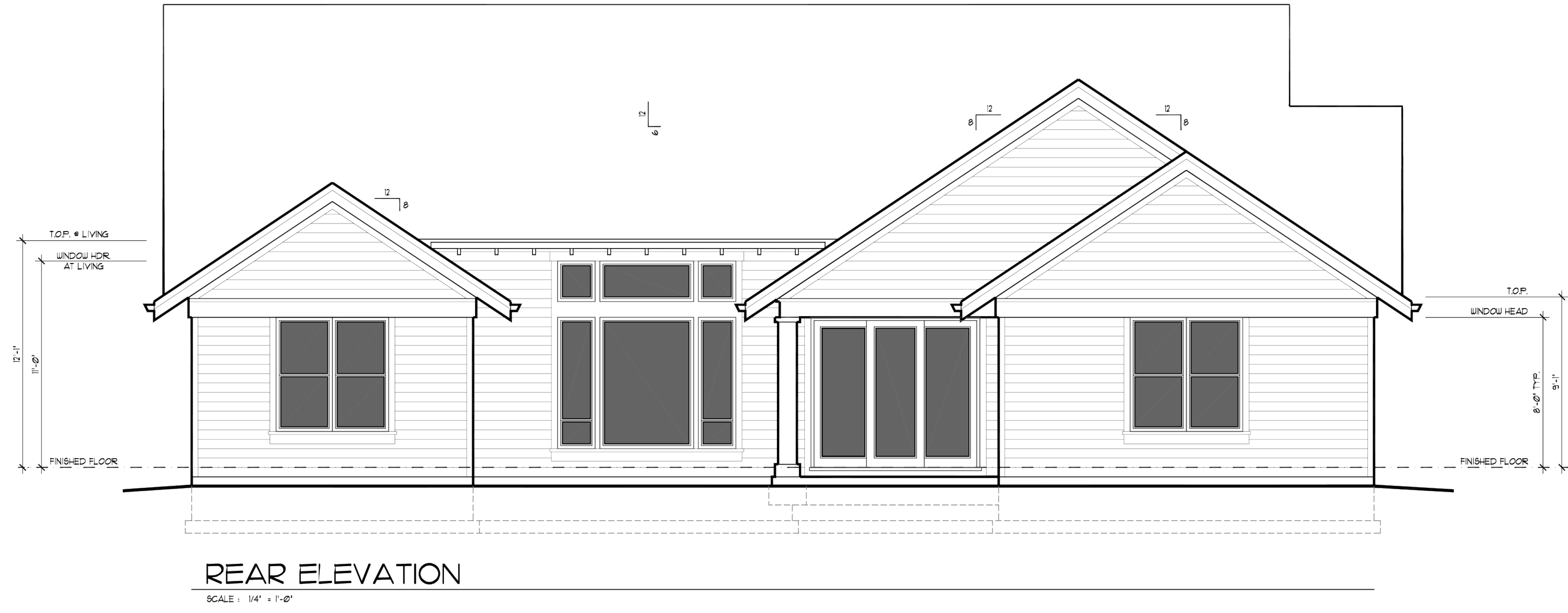
COPYRIGHT © 2024 ALAN MASCORD DESIGN ASSOCIATES, INC.



1 POST DETAIL
SCALE: 3/4" = 1'-0"



A TYPICAL EXTERIOR WINDOW TRIM
SCALE: 3/4" = 1'-0"



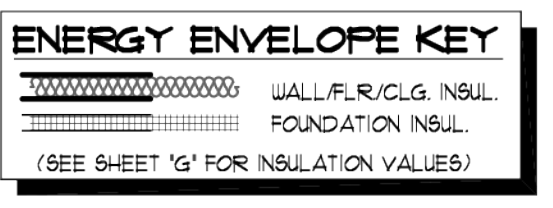
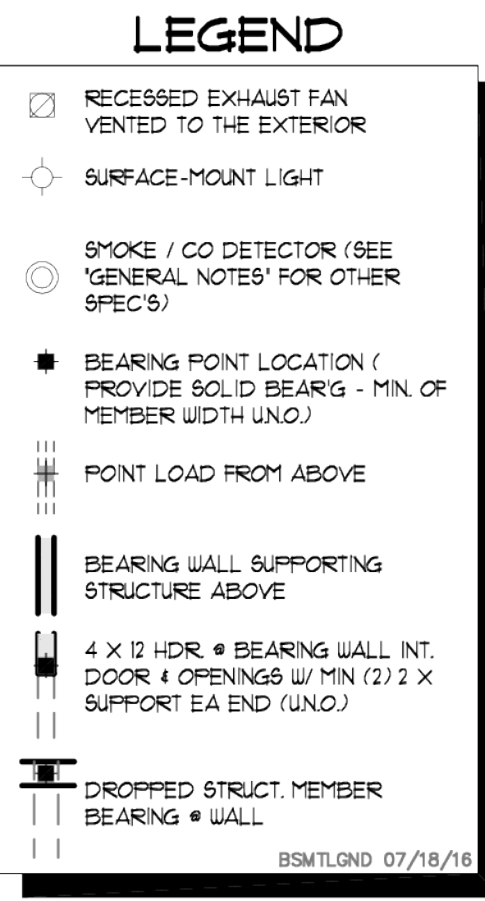
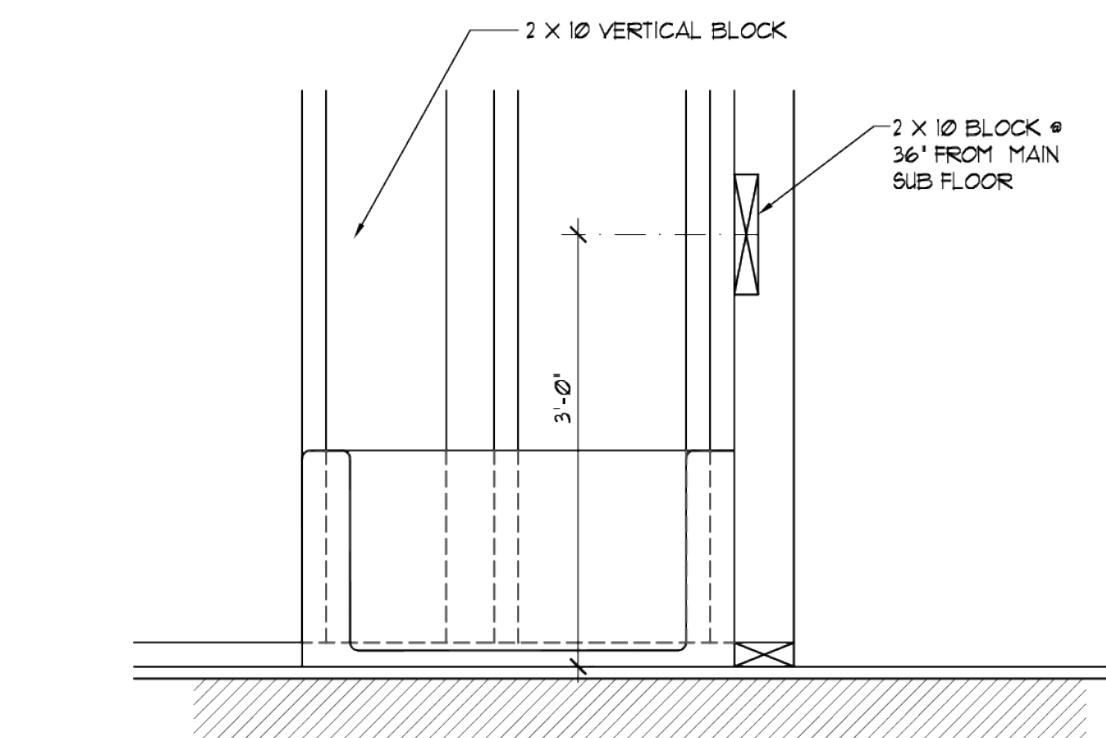
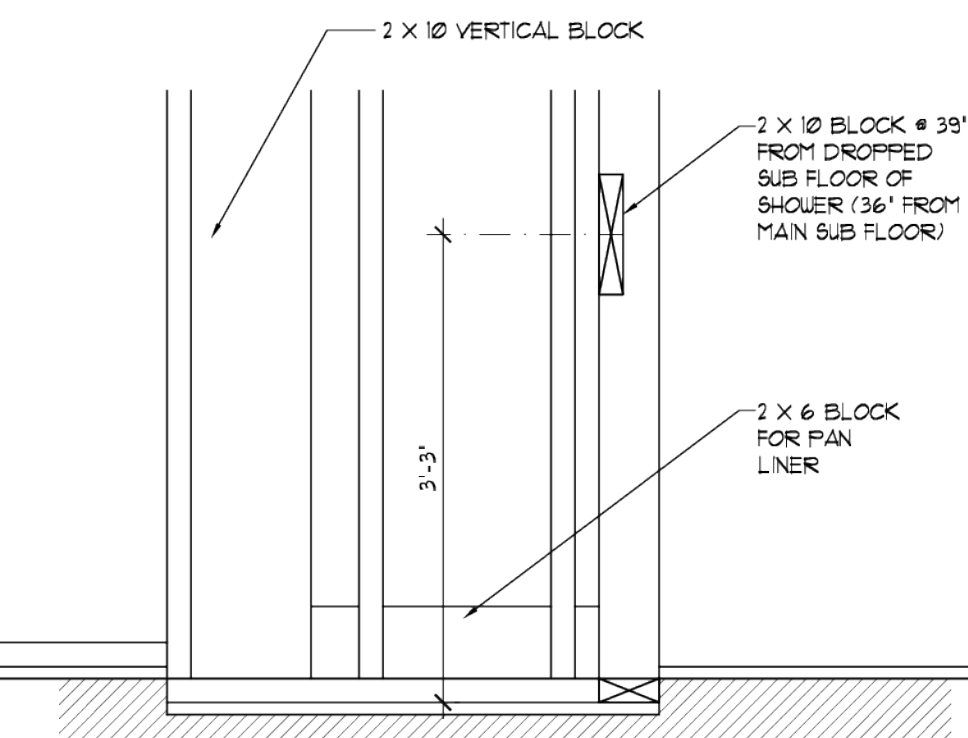
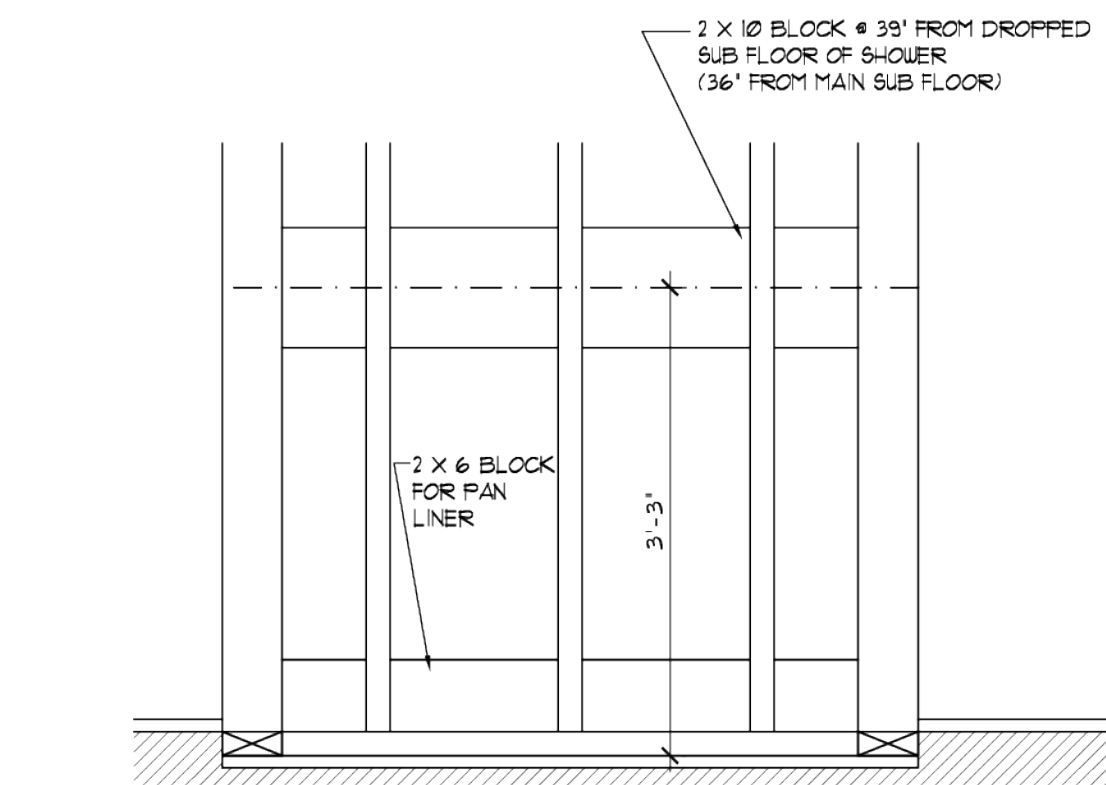
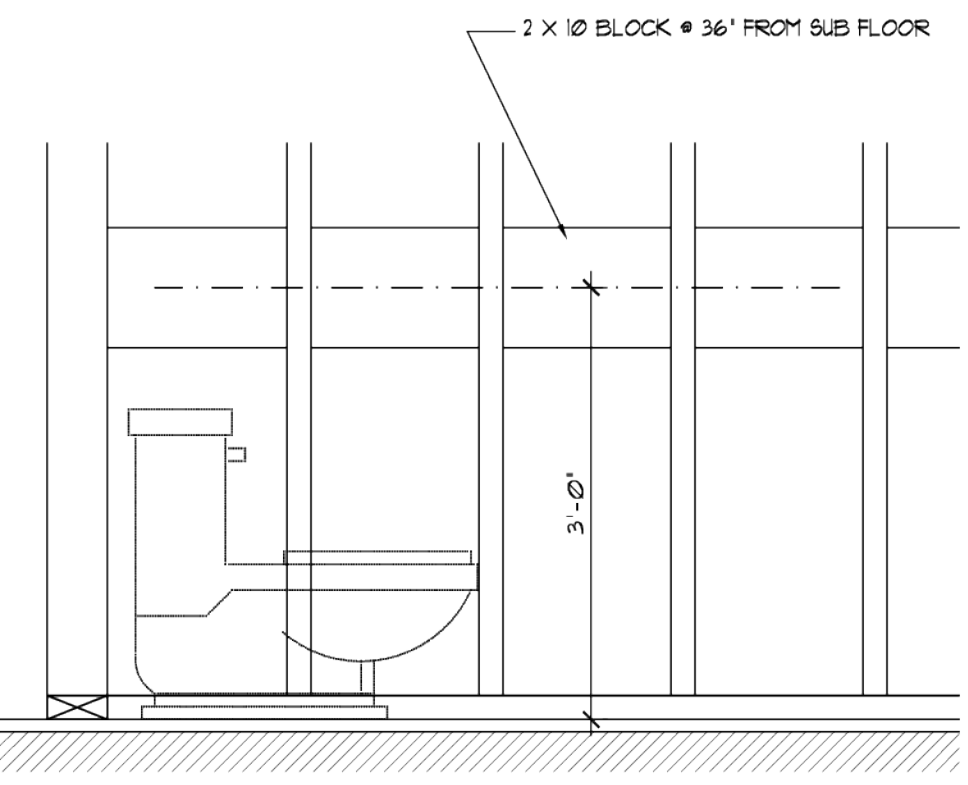
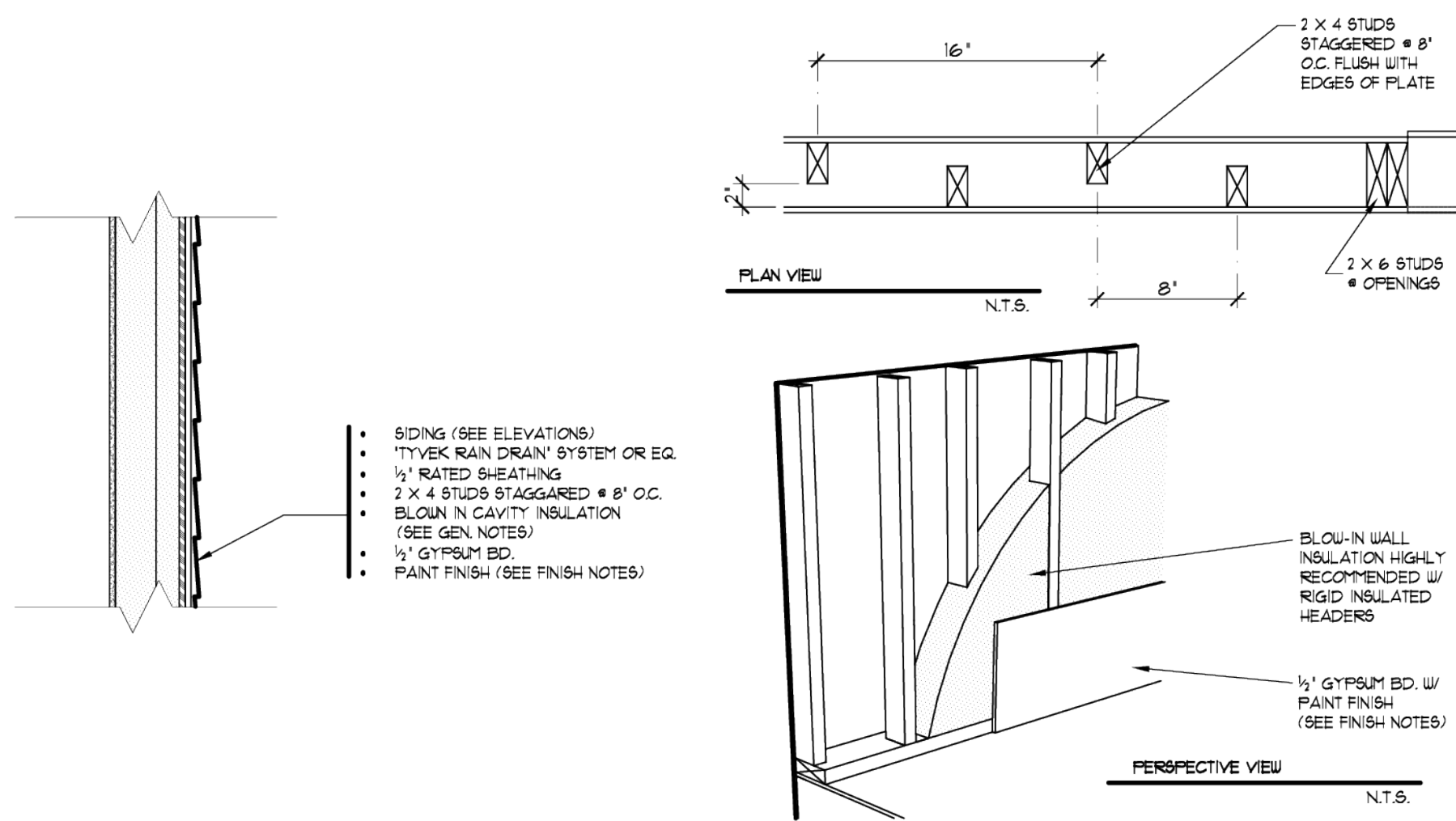
ROOFING MATERIAL (SEE ROOF PLAN)
 HORIZONTAL FIBER CEMENT LAP SIDING
 2 X 10 R/S TRIM BD. W/ 26 GA. G.I. FLASHING
 G.I. GUTTER ON 2 X 8 FASCIA C/W DOWNSPOUTS (SEE ROOF PLAN)
 5/4 X FIBERCEMENT CORNER BDB.
 THE TYPE OF EXTERIOR FINISH, THE INSTALLATION AND THE WATERPROOFING DETAILS ARE ALL TO BE THE FULL RESPONSIBILITY OF THE OWNER/BUILDER. THIS DESIGNER ASSUMES NO RESPONSIBILITY FOR THE INTEGRITY OF THE BLDG ENVELOPE



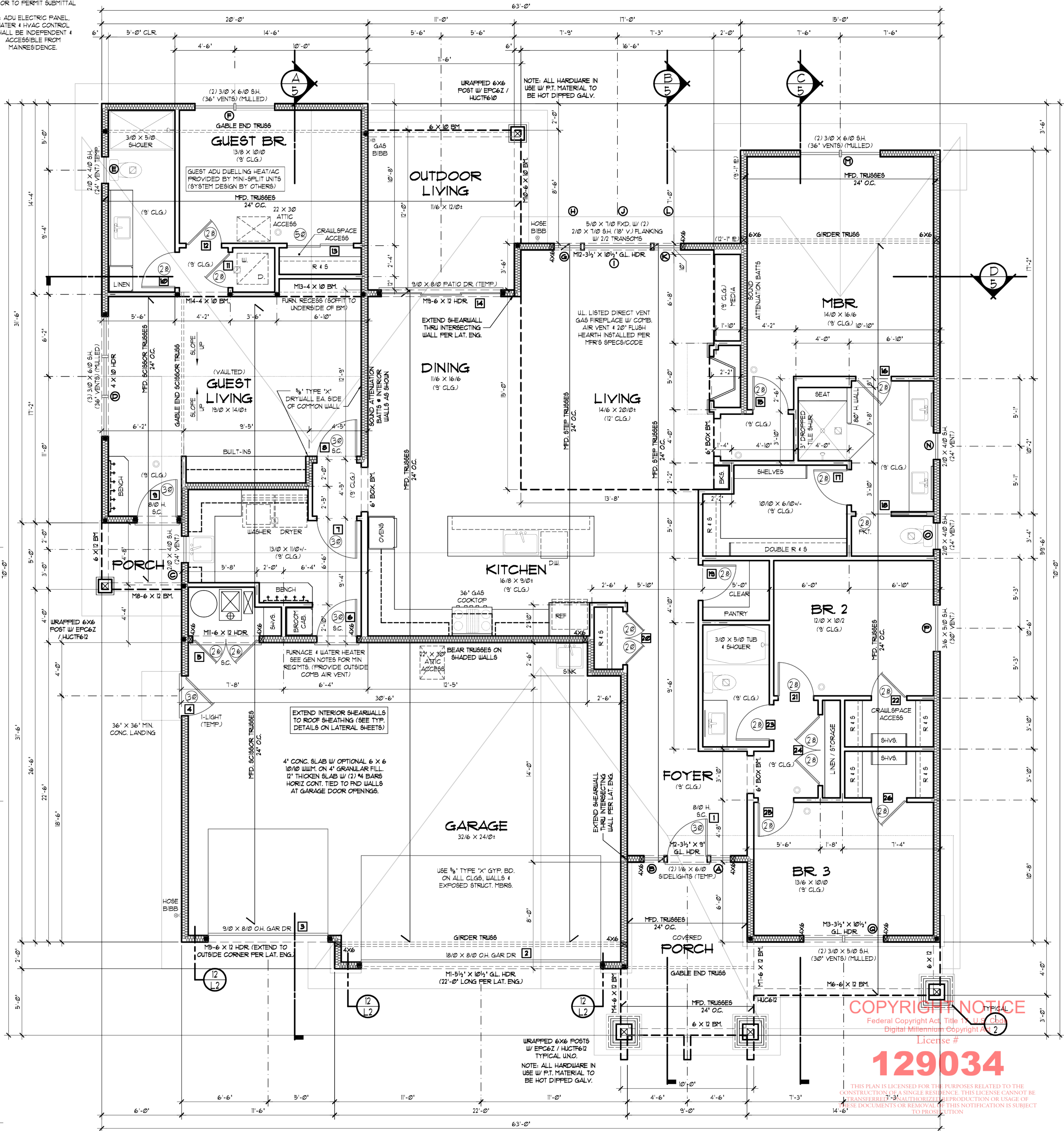
COPYRIGHT NOTICE
 License # **129034**
 THIS PLAN IS LICENSED FOR THE PURPOSES RELATED TO THE CONSTRUCTION OF A SINGLE RESIDENCE. THIS LICENSE CANNOT BE TRANSFERRED. UNAUTHORIZED REPRODUCTION OR USAGE OF THESE DOCUMENTS OR REMOVAL OF THIS NOTIFICATION IS SUBJECT TO PROSECUTION.

IN AN EFFORT TO DELIVER A BETTER HOME, QUAIL HOMES, LLC RESERVES THE RIGHT TO CHANGE ELEVATIONS, SPECIFICATIONS, MATERIALS AND PRICES WITHOUT PRIOR NOTICE.
 ANY STATEMENTS MADE HEREIN OR OTHERWISE BY QUAIL HOMES, LLC, WHETHER ORALLY OR IN WRITING, REGARDING THE SPECIFICATIONS, QUALITY, COMPONENTS AND PERFORMANCE OF ITS HOMES, INCLUDING, BUT NOT LIMITED TO, THE ENERGY PERFORMANCE (WATER USAGE, ENERGY EFFICIENCY), ARE INFORMATIONAL ONLY AND SHALL NOT BE RELIED ON AS GUARANTEES OR WARRANTIES AS TO THE ACCURACY, COMPLETENESS, RELIABILITY OR SUITABILITY OF SUCH INFORMATION.

THE CONTRACTOR ASSUMES FULL RESPONSIBILITY FOR THE CORRECT INSTALLATION OF ALL EXTERIOR FINISHES AND WEATHERPROOFING.



NOTE:
1. VERIFY ALL ADU ZONING AND PERMIT REQUIREMENTS W/ LOCAL JURISDICTION PRIOR TO PERMIT SUBMITTAL.
2. ADU ELECTRIC PANEL, WATER & HVAC CONTROL SHALL BE INDEPENDENT & ACCESSIBLE FROM MAIN RESIDENCE.



COPYRIGHT NOTICE
Federal Copyright Act Title 17, USC 101
Digital Millennium Copyright Act
License # **129034**

IN AN EFFORT TO DELIVER A BETTER HOME, QUAIL HOMES, LLC RESERVES THE RIGHT TO CHANGE ELEVATIONS, SPECIFICATIONS, MATERIALS AND PRICES WITHOUT PRIOR NOTICE.

ANY STATEMENTS MADE HEREIN OR OTHERWISE BY QUAIL HOMES, LLC, WHETHER ORALLY OR IN WRITING, REGARDING THE SPECIFICATIONS, QUALITY, COMPONENTS AND PERFORMANCE OF ITS HOMES, INCLUDING, BUT NOT LIMITED TO THE ENERGY PERFORMANCE (WATER USAGE, ENERGY EFFICIENCY), ARE INFORMATIONAL ONLY AND SHALL NOT BE RELIED ON AS GUARANTEES OR WARRANTIES AS TO THE ACCURACY, COMPLETENESS, RELIABILITY OR SUITABILITY OF SUCH INFORMATION.

REFER TO ENGINEERING SHEETS FOR LATERAL SPECIFICATIONS PRIOR TO CONSTRUCTION

Mascord COLLECTION

RESIDENCE FOR

QUAIL HOMES

25# SNOW LOAD

MAIN FLOOR 2029 SQ. FT. • 572 SQ. FT. • 783 SQ. FT. GARAGE AREA

ADU SUITE

1168AB

3

COPYRIGHT © 2024 ALAN MASCORD DESIGN ASSOCIATES, INC.