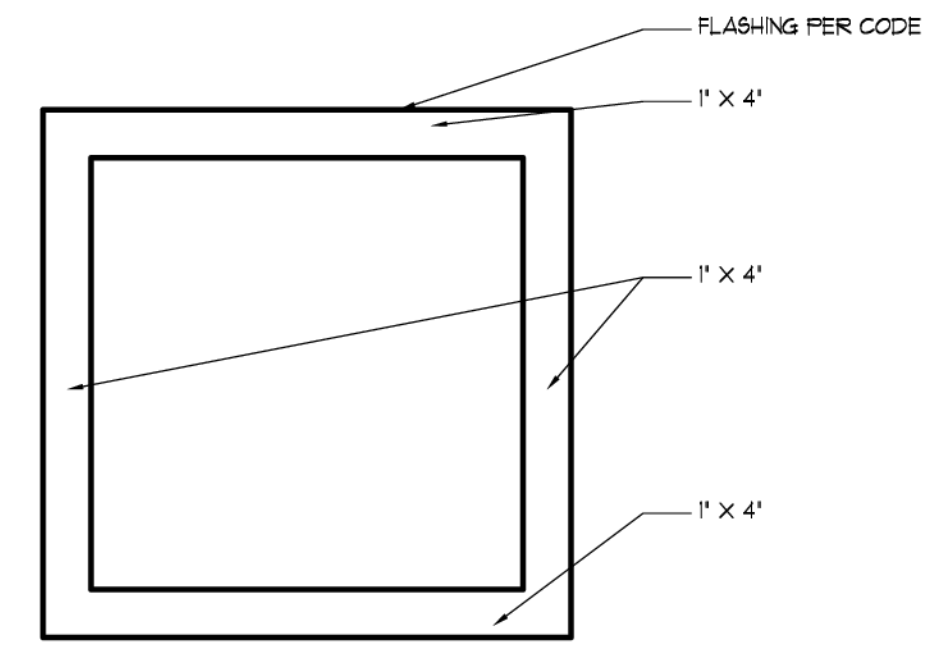


ROOFING MATERIAL (SEE ROOF PLAN)
 G. I. GUTTER ON 2 X 8 FASCIA
 C/W DOWNSPOUTS (SEE ROOF PLAN)
 1 X 2 CEDAR BATTENS # 12' O.C. OVER
 1/2" ACX PLYWOOD
 5/4 X FIBERCEMENT CORNER BDS.
 THE TYPE OF EXTERIOR FINISH, THE
 INSTALLATION AND THE WATERPROOFING
 DETAILS ARE ALL TO BE THE FULL
 RESPONSIBILITY OF THE OWNER/BUILDER. THIS
 DESIGNER ASSUMES NO RESPONSIBILITY FOR
 THE INTEGRITY OF THE BLDG ENVELOPE

LEFT SIDE ELEVATION

SCALE: 1/4" = 1'-0"



1 TYPICAL EXTERIOR WINDOW TRIM

SCALE: 3/4" = 1'-0"



FRONT ELEVATION

SCALE: 1/4" = 1'-0"

COPYRIGHT NOTICE
 Federal Copyright Act, Title 17, U.S. Code
 Digital Millennium Copyright Act
 License #
129067

THIS PLAN IS LICENSED FOR THE PURPOSES RELATED TO THE
 CONSTRUCTION OF A SINGLE RESIDENCE. THIS LICENSE CANNOT BE
 TRANSFERRED. UNAUTHORIZED REPRODUCTION OR USAGE OF
 THESE DOCUMENTS OR REMOVAL OF THIS NOTIFICATION IS SUBJECT
 TO PROSECUTION.

IN AN EFFORT TO DELIVER A BETTER HOME, QUAIL HOMES, LLC RESERVES
 THE RIGHT TO CHANGE ELEVATIONS, SPECIFICATIONS, MATERIALS AND
 PRICES WITHOUT PRIOR NOTICE.
 ANY STATEMENTS MADE HEREIN OR OTHERWISE BY QUAIL HOMES, LLC,
 WHETHER ORALLY OR IN WRITING, REGARDING THE SPECIFICATIONS,
 QUALITY, COMPONENTS AND PERFORMANCE OF ITS HOMES, INCLUDING, BUT
 NOT LIMITED TO, THE ENERGY PERFORMANCE (WATER USAGE, ENERGY
 EFFICIENCY), ARE INFORMATIONAL ONLY. SHALL NOT BE RELIED ON AS
 GUARANTEES OR WARRANTIES AS TO THE ACCURACY, COMPLETENESS,
 RELIABILITY OR SUITABILITY OF SUCH INFORMATION.

THE CONTRACTOR ASSUMES FULL RESPONSIBILITY
 FOR THE CORRECT INSTALLATION OF ALL
 EXTERIOR FINISHES AND WEATHERPROOFING.

Mascord
 COLLECTION

1168ES-1-QUAIL 23
 PROJECT MANAGER:RRR
 DRAWN: 03/11/24 WSD

RESIDENCE BY:
QUAIL 23
 LOT 21 - LARKVIEW
 VANCOUVER, W.A.

25# SNOW LOAD
 MAIN FLOOR 2067 SQ. FT.
 TOTAL AREA 2067 SQ. FT.
 GUEST SUITE 459 SQ. FT.
 GARAGE AREA 627 SQ. FT.

1168ES
1

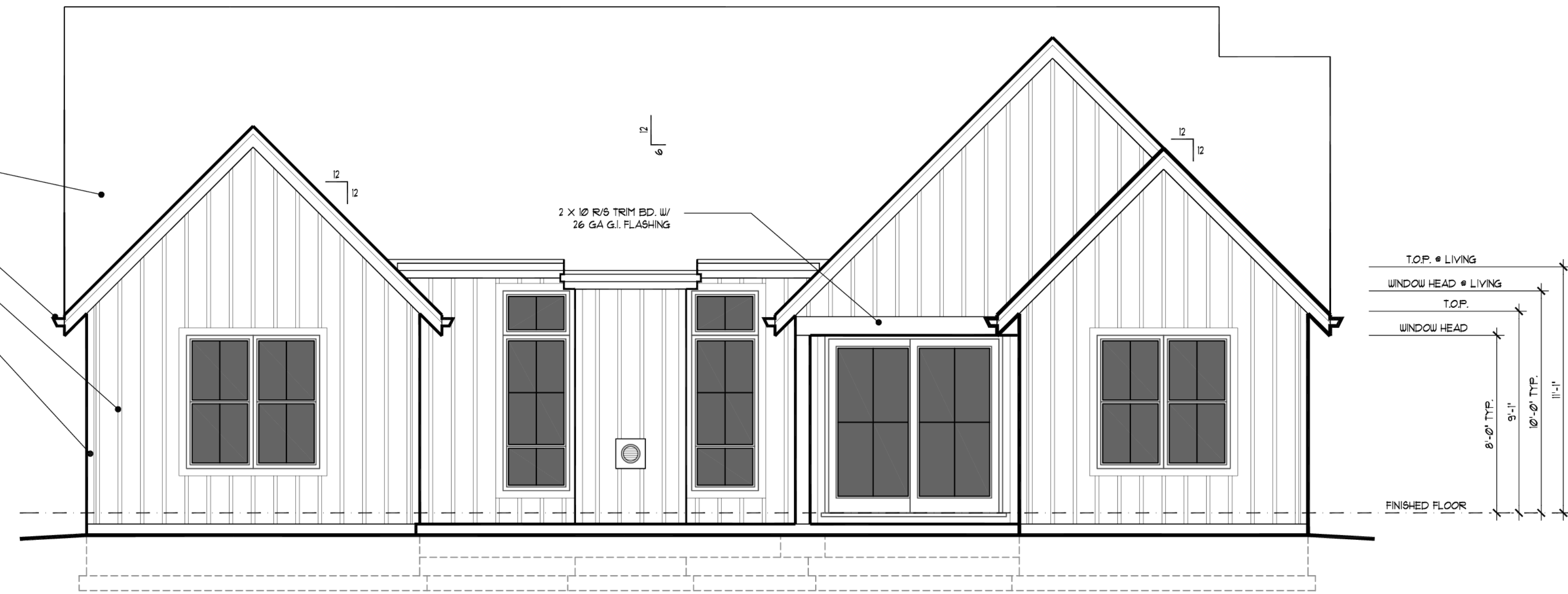
ROOFING MATERIAL
(SEE ROOF PLAN)

G. I. GUTTER ON 2 X 8 FASCIA
C/W DOWNSPOUTS (SEE ROOF PLAN)

1 X 2 CEDAR BATTENS @ 12" O.C. OVER
1/2" A/CX PLYWOOD

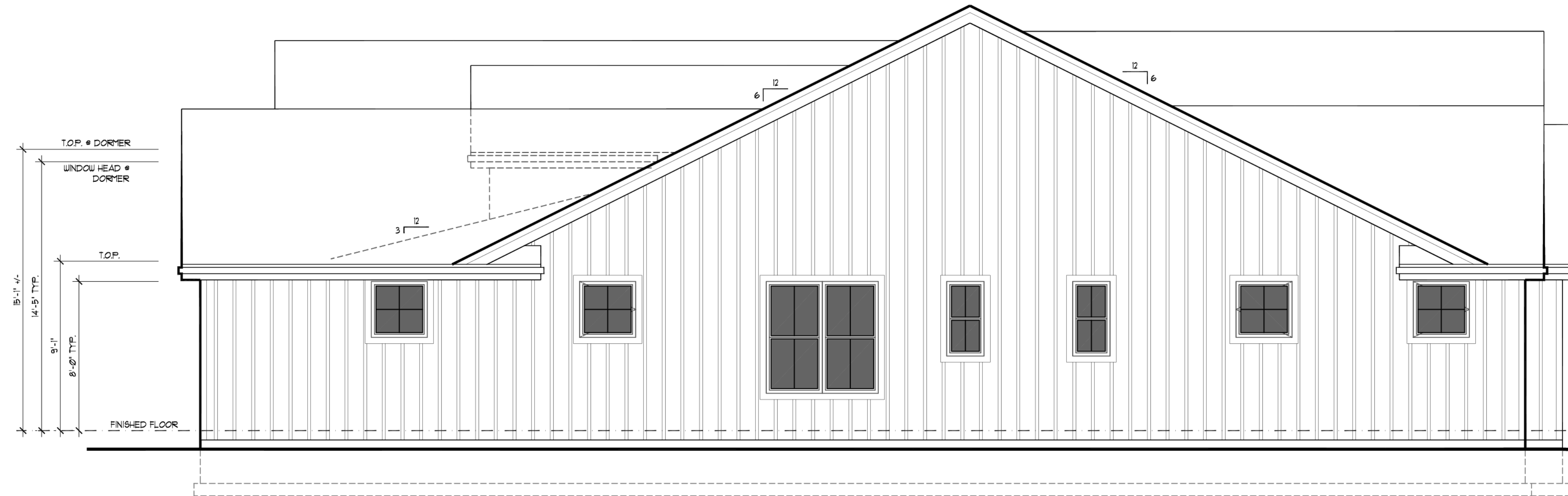
5/4 X FIBERCEMENT CORNER BDS.

THE TYPE OF EXTERIOR FINISH, THE
INSTALLATION AND THE WATERPROOFING
DETAILS ARE ALL TO BE THE FULL
RESPONSIBILITY OF THE OWNER/BUILDER. THIS
DESIGNER ASSUMES NO RESPONSIBILITY FOR
THE INTEGRITY OF THE BLDG ENVELOPE



REAR ELEVATION

SCALE: 1/4" = 1'-0"



RIGHT SIDE ELEVATION

SCALE: 1/4" = 1'-0"

COPYRIGHT NOTICE
Federal Copyright Act, Title 17, U.S. Code
Digital Millennium Copyright Act
License #

129067

THIS PLAN IS LICENSED FOR THE PURPOSES RELATED TO THE
CONSTRUCTION OF A SINGLE RESIDENCE. THIS LICENSE CANNOT BE
TRANSFERRED, UNAUTHORIZED REPRODUCTION OR USAGE OF
THESE DOCUMENTS OR REMOVAL OF THIS NOTIFICATION IS SUBJECT
TO PROSECUTION

THE CONTRACTOR ASSUMES FULL RESPONSIBILITY
FOR THE CORRECT INSTALLATION OF ALL
EXTERIOR FINISHES AND WEATHERPROOFING.

COPYRIGHT © 2024 ALAN MASCORD DESIGN ASSOCIATES, INC.

IN AN EFFORT TO DELIVER A BETTER HOME, QUAIL HOMES, LLC RESERVES
THE RIGHT TO CHANGE ELEVATIONS, SPECIFICATIONS, MATERIALS AND
PRICES WITHOUT PRIOR NOTICE.

ANY STATEMENTS MADE HEREIN OR OTHERWISE BY QUAIL HOMES, LLC,
WHETHER ORALLY OR IN WRITING, REGARDING THE SPECIFICATIONS,
QUALITY, COMPONENTS AND PERFORMANCE OF ITS HOMES, INCLUDING, BUT
NOT LIMITED TO, THE ENERGY PERFORMANCE (WATER USAGE, ENERGY
EFFICIENCY), ARE INFORMATIONAL ONLY. SHALL NOT BE RELIED ON AS
GUARANTEES OR WARRANTIES AS TO THE ACCURACY, COMPLETENESS,
RELIABILITY OR SUITABILITY OF SUCH INFORMATION.

